

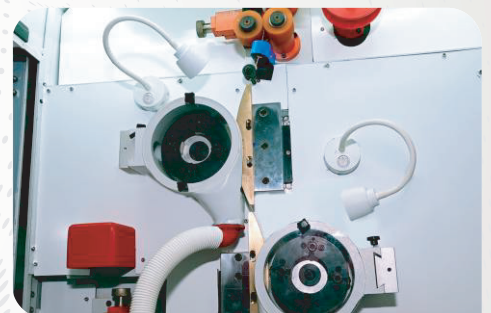


8 Cut Ball & Flat Chain Diamond Faceting Machine

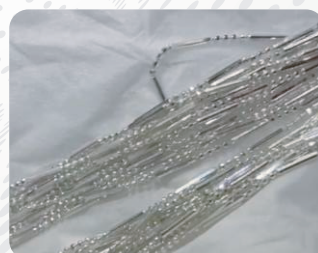
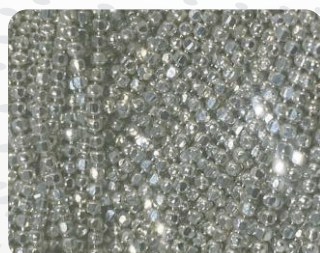
8 CUT



Inset image



Samples



Technical Specification

Model: 8 CUT

MACHINE NAME	8 CUT BALL & FLAT CHAIN DIAMOND FACETING MACHINE
CONTROLLER	PLC
MAX CONTROL AXIS	2
AXIS	Z1 & Z2
SPINDLE	2 HORIZONTAL
SPINDLE SPEED - RPM	10000 RPM
CHAIN SIZE	MIN. 0.9 MM (BALL & FLAT)
HEADS	2 HORIZONTAL
POWER SUPPLY	SINGLE PHASE
INSTALLED POWER	3.5 KW
FUNCTION	TO DO 8 CUT & FLAT DIAMOND FACETING ON FLAT & BALL CHAINS
L X B X H	26 × 39 × 64 INCH
WEIGHT	450 KG

Specification

* All the machine components are machined on precision CNC machine and are hardened and grounded. These components are individually inspected for the accuracies. The machine is assembled in a controlled environment.



SOLANKI MECHANIC WORKS

40-W, Bhaktinagar, Udhyognagar,
G.I.D.C. Industrial Estate,
Rajkot - 360 002 (Gujarat) India

☎ Sales: +91 89800 00182
✉ info@soliyo.com
🌐 www.soliyo.com

