

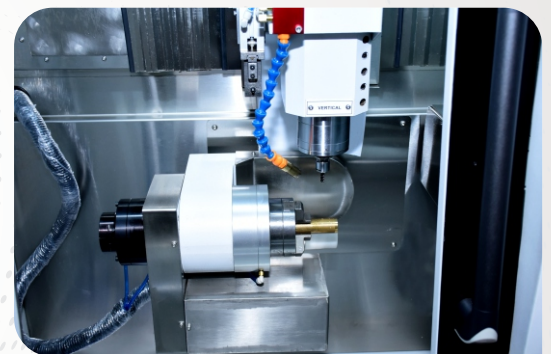


# FX serie - Turning, Milling Centering Machine

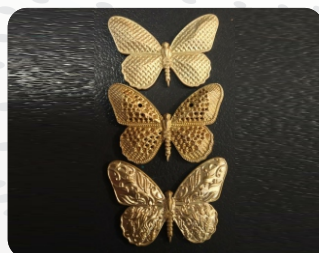
**FX- 2TMC**



Inset image



## Samples



|                     |  |
|---------------------|--|
| MACHINE NAME        | FX- 2TMC   |
| CONTROLLER          | CNC  |
| MAX CONTROL AXIS    | 10   |
| SIM CONTROL AXIS    | 5  |
| AXIS                | X/Y/Z1/Z2/A/B/C/W/SP1/SP2  |
| SPINDLE             | VERTICAL/HORIZONTAL  |
| SPINDLE SPEED - RPM | 40000RPM/12000RPM  |
| HEADS               | VERTICAL & HORIZONTAL  |
| ATC                 | 20   |
| DESIGNING SOFTWARE  | 5 AXIS DESIGNING SOFTWARE  |
| AIR SUPPLY          | 6 BAR  |
| POWER SUPPLY        | 3 PHASE - 440 V  |
| INSTALLED POWER     | 7.5KW  |
| FUNCTION            | WITH VERTICAL & HORIZONTAL HEAD, 2D & 3D - DEPENDS ON DESIGN<br>POSSIBLITES - PURE 5 AXIS WITH TURNING |
| L X B X H           | 55/57/68 INCH  |
| WEIGHT              | 1250 KG  |

## Specification

\* All the machine components are machined on precision CNC machine and are hardened and grounded. These components are individually inspected for the accuries. The machine is assemble in a controlled environment.



### SOLANKI MECHANIC WORKS

40-W, Bhaktinagar, Udhoygnagar,  
G.I.D.C. Industrial Estate,  
Rajkot - 360 002 (Gujarat) India

Sales: +91 89800 00182

info@soliyo.com

www.soliyo.com

